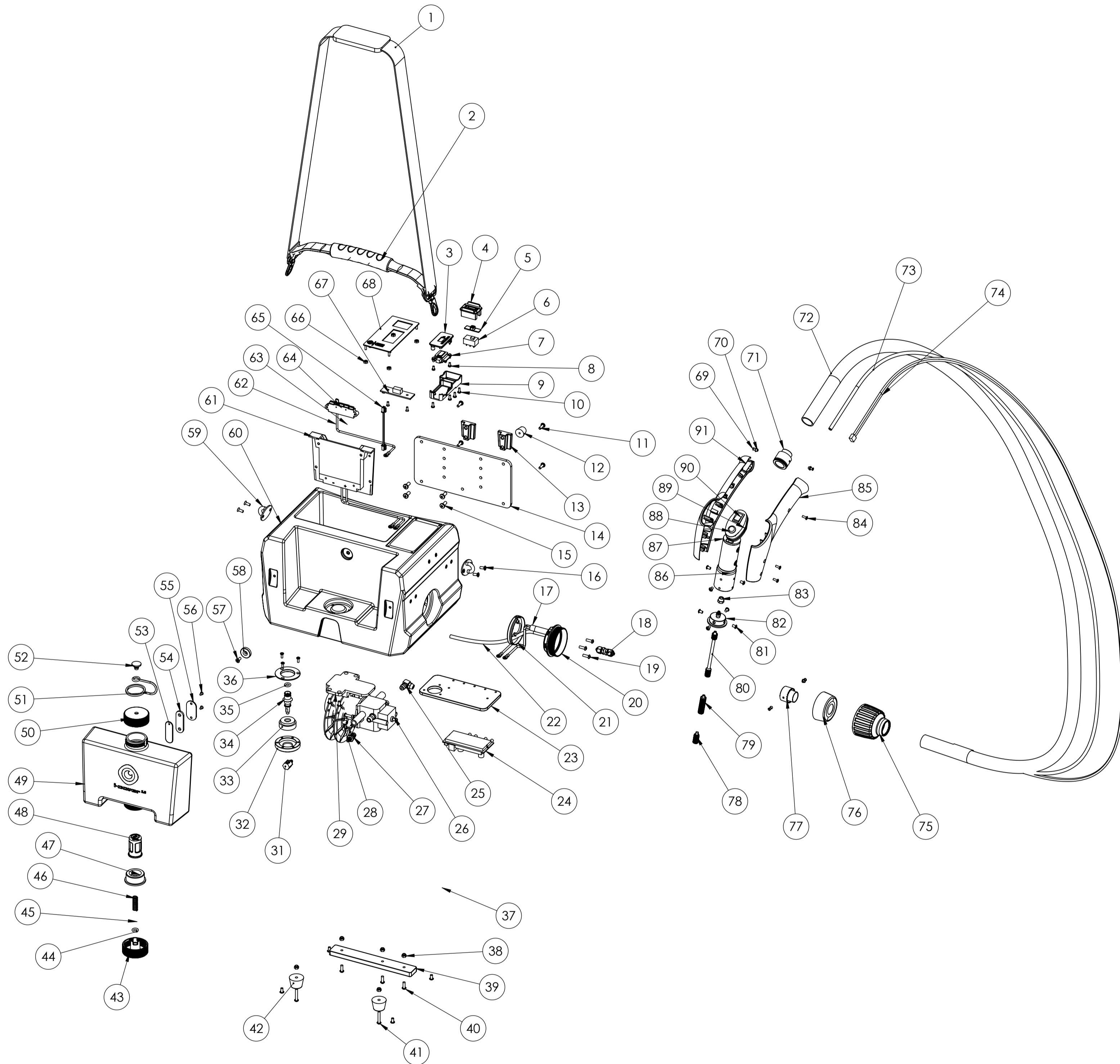


IM10.FCT.0000B  
I cover 1.0



| Item | Product       | Description   | Quantity |
|------|---------------|---|----------|
| 1    | 106.1287.0    | STRAP WITH CLIP FOR I REMOVE MINI                             | 1        |
| 2    | 106.1290.0    | I-REMOVER NEW HANDLE  | 1        |
| 3    | 106.1284.797  | TIME COVER  | 1        |
| 4    | 106.1283.797  | SWITCH COVER  | 1        |
| 5    | 106.1285.797  | SWITCH SLIDER   | 1        |
| 6    | S.106.1282.0  | SLIDE SWITCH  | 1        |
| 7    | 72.0416.1     | 24V TIMER PCB with 250mm 2P/PH2.5                             | 1        |
| 8    | 106.1111.4    | M3X6 PAN HEAD SELF-TAPPING SCREW                              | 2        |
| 9    | 106.1286.797  | BASE ON THE BACK  | 1        |
| 10   | 00.0002.41    | CROSS RECESSED PAN HEAD SELF-TAPPING SCREW 3X8                | 6        |
| 11   | 72.0121.1     | SCREW M4X12, CROSS HEAD, STANDARD THREAD, SST                 | 8        |
| 12   | 106.1304.0    | RUBBER FOOT 17X13X14  | 1        |
| 13   | 106.1269.0    | HOOK MALE   | 2        |
| 14   | 106.1272.0    | BACK PLATE  | 1        |
| 15   | 25.0032.0     | SCREW M5 X 12   | 4        |
| 16   | 72.0206.1     | SCREW COUNTER SUN K BOLT M4X8 STAIN LESS STEEL                | 2        |
| 17   | 106.1254.0    | CABLE FOR LANCE HEATER, ON MAIN PCBA                          | 1        |
| 18   | S.106.2080.1  | ASSY DIRECT TWIST CONNECTOR 6X4 PIPE SU304                    | 1        |
| 19   | 106.1111.10   | M4X8 HEX-SOCKET BOTTOM HEAD SCREW                             | 3        |
| 20   | 106.3097.797B | INSERT CAP FOR BODY BLUE BATTERY VERSION                      | 1        |
| 21   | 106.3311.0    | METAL RING FOR BODY INSERT CAP FITTING                        | 1        |
| 22   | 106.0118.0    | TRANSPARENT PIPE FOR FLUID OUTPUT 6X4MM                       | 0        |
| 23   | 106.1315.0    | PLATE FOR FIXING PCBA I COVER 1.0                             | 1        |
| 24   | 106.1305.1    | CONNECT BOARD FOR I COVER-VOLTAGE ADJUSTABLE                  | 1        |
| 25   | 106.1301.1    | ANGLE METAL CONNECTOR 4X8                                     | 1        |
| 26   | 106.0130.6    | PUMP FOR I COVER, 24V, 1.5A                                   | 1        |
| 27   | 106.1300.1    | STRAIGHT CONNECTOR 4X8  | 1        |
| 28   | 106.1293.0    | PUMP FIXER  | 2        |
| 29   | 106.1292.0    | PUMP BASE   | 1        |
| 30   | 106.1294.0A   | PLATE A   | 1        |
| 31   | 106.1318.0    | CONNECTOR   | 1        |
| 32   | 106.1273.0A   | WATER CONNECTOR HOLDER  | 1        |
| 33   | 115.0111.0D   | [MCH 211-203] (105) WATER CONNECTOR MALE RUBBER               | 1        |
| 34   | 106.1319.0    | WATER CONNECTOR MALE PIN I COVER                              | 1        |
| 35   | 115.0096.67   | [MCH 029-103] (102) O-RING 6X3                                | 1        |
| 36   | 106.1303.0    | FIX PLATE   | 1        |
| 37   | 106.1261.0    | BODY BASE   | 1        |
| 38   | 72.0261.0     | NUT M4 NYLON STAINLESS  | 2        |
| 39   | 106.2153.0    | BOTTOM RUBBER FOOT PLATE                                      | 1        |
| 40   | 72.0121.1     | SCREW M4X12, CROSS HEAD, STANDARD THREAD, SST                 | 7        |
| 41   | 106.1111.15   | M4X28 HEX-SOCKET BOTTOM HEAD SCREW                            | 2        |
| 42   | 87.0032.0     | RUBBER FOOT BACK HANDLE, Colour: Black                        | 2        |
| 43   | 115.0086.2D   | [MCH 211-193] (105) WATER CONNECTOR FEMALE CAP WHITE          | 1        |
| 44   | 115.0210.67   | [MCH 029-103] (101) O-RING 7X2.5                              | 1        |
| 45   | 115.0087.0B   | [MCH 211-194] (103) WATER CONNECTOR FEMALE VALVE              | 1        |
| 46   | 115.0085.0    | [MCH 043-103] (101) COMPRESSION SPRING 7X9X28.5               | 1        |
| 47   | 115.0088.0B   | [MCH 211-195] (103) WATER CONNECTOR FEMALE RUBBER             | 1        |
| 48   | 115.0083.357D | [MCH 211-028] (105) WATER CONNECTOR FEMALE FILTER GREY P431   | 1        |
| 49   | L.106.1259.1  | ASSY WATER TANK I COVER 1.0 LOGO PRINT                        | 1        |
| 50   | 72.0251.797   | CAP WITH HOLE, Kleur: Blue .797 (P312C)                       | 1        |
| 51   | 72.0254.1     | SLEEVE CAP HOLDER CLEAN TANK                                  | 1        |
| 52   | 72.0252.0     | CAP HOLDER  | 1        |
| 53   | 106.1266.0    | HOLDER PLATE IN TANK  | 1        |
| 54   | 106.1267.0    | RUBBER SEAL IN TANK   | 1        |
| 55   | 103.0156.0A   | MAGNET GASKET   | 1        |
| 56   | 106.1111.2    | M3X6 FLAT HEAD MACHINING SCREW                                | 2        |
| 57   | 72.0206.1     | SCREW COUNTER SUN K BOLT M4X8 STAIN LESS STEEL                | 1        |
| 58   | 103.0017.0    | FLAND MAGNET ROUND  | 1        |
| 59   | 106.1260.0    | HOOK  | 1        |
| 60   | 106.1255.797  | I-REMOVE MINI MAIN BODY BLUE                                  | 1        |
| 61   | 106.1306.357A | SOCKET C05 BATTERY FOR I COVER                                | 1        |
| 62   | 24.0096.7     | WIRE BLACK L=200 MM RV3.5-4/MALE PIN AWG12                    | 2        |
| 63   | 24.0096.8     | WIRE RED L=200 MM RV3.5-4/MALE PIN AWG12                      | 1        |
| 64   | 72.0068.357   | BATTERY CONNECTOR MALE Left:Blue   Right:Grey, Kleur: Grey .  | 1        |
| 65   | 106.2279.0    | CONNECTOR WIRE FOR POWER INDICATOR PCB BOARD                  | 1        |
| 66   | 20.0032.0     | NUT M3 NYLON STAINLESS  | 4        |
| 67   | 106.2100.1A   | LED LIGHT PCB FOR POWER SUPPLY BATTERY VERSION                | 1        |
| 68   | 106.3315.0    | CONTROL PANEL ON BODY I COVER                                 | 1        |
| 69   | 106.1111.30   | M3 WASHER   | 4        |
| 70   | 106.1111.31   | M3*10 RIVET   | 4        |
| 71   | 106.3105.797  | HOSE END CAP FOR HANDLE BLUE                                  | 1        |
| 72   | 106.0023.0    | PROTECTION PLASTIC HOSE OUTSIDE 25MM X 1.5M                   | 1        |
| 73   | R.106.0118.3  | CUTTING L=1.8M PU PIPE 6X4MM                                  | 1        |
| 74   | 106.1252.1    | CABLE FOR LANCE I-COVER                                       | 1        |
| 75   | 106.0021.357A | HOSE CONNECTOR CAP GREY                                       | 1        |
| 76   | 106.2168.797A | SUPPORT CAP BLUE  | 1        |
| 77   | 106.2105.0A   | HOSE END CAP  | 1        |
| 78   | 106.1296.X    | SPRAY NOZZLE  | 1        |
| 79   | S.106.1311.0  | ASSY FILTER COMPONENT - I COVER                               | 1        |
| 80   | 106.1297.0A   | EXTEND TUBE FOR SPRAY NOZZLE SUS304                           | 1        |
| 81   | 106.1111.5    | M4*6 HEX-SOCKET BOTTOM HEAD SCREW                             | 10       |
| 82   | 106.1291.0A   | NOZZLE HEAD FOR I COVER                                       | 1        |
| 83   | 106.1312.0    | M8 NUT FOR SEAL OF I COVER NOZZLE HEAD                        | 1        |
| 84   | 00.0002.62    | SCREW ST3 X 14 CROSS  | 3        |
| 85   | 97.2003.3     | HANDLE COVER EASY SCRUB LEFT (910122), Colour: Grey .3 (P432) | 1        |
| 86   | 106.1240.1    | AL TUBE I-COVER   | 1        |
| 87   | 106.1144.0    | RUBBER STOPER FOR HANDLE                                      | 1        |
| 88   | 106.1322.0    | PLASTIC BLOCK 13  | 1        |
| 89   | 97.2016.797   | PENAL SWITCH HANDLE EASY SCRUB, Kleur: Blue .797 (P312C)      | 1        |
| 90   | 97.0113.0     | SWITCH 2P 10A 125AC   | 1        |
| 91   | 97.2004.3     | HANDLE COVER EASY SCRUB RIGHT (910121), Colour: Grey .3 (P43) | 1        |