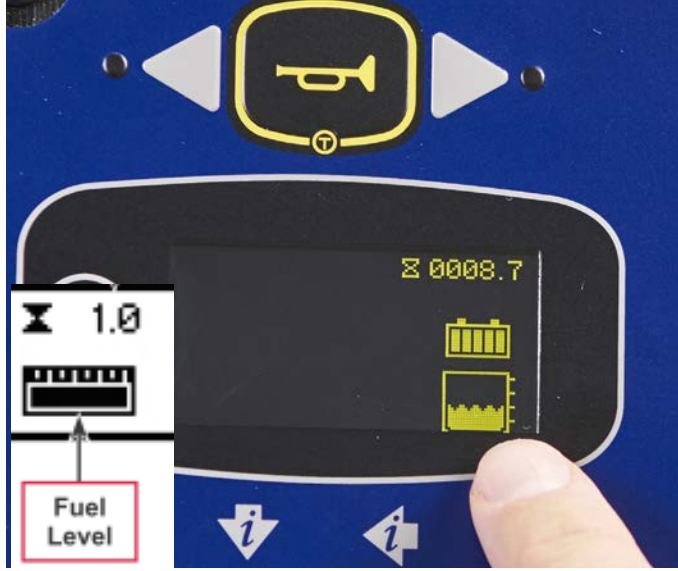


Use and Maintenance

- CS7010

ATTENTION! Do not use the machine before you have read and understood the User Manual



1. Check the Diesel fuel tank level / LPG bottle charge/Battery charge. In case re-fill/change the LPG Bottle / charge the batteries



2. Check the fresh water level. In case, fill the tank with clean water. The clean water temperature must not exceed 40 °C



3. Fill the EcoFlex™ tank (placed under the seat) with a detergent suitable for the work to be performed (highly concentrated detergent)



4. Install the squeegee and fasten it to its assembly then connect the vacuum hose to the squeegee. Make proper height and inclination adjustments



5. Install brushes/ main and side brooms



6. Fill in the DustGuard™ water tank (if equipped)



7. Turn the ignition key to "I"



8. Press OneTouch™ scrub (adjusting the pressure if needed) and OneTouch™ sweep buttons according to your application



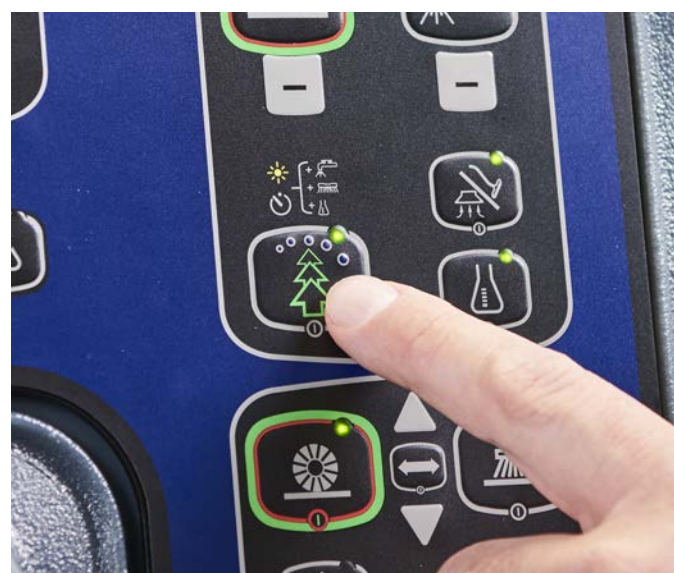
9. Adjust to the desired water flow



10. Adjust to the desired chemical concentration (shown in the display)



11. Press the forward pedal and start operating the machine



12. Press the Ecoflex™ switch whenever you temporarily need a greater cleaning power



13. Empty the recovery tank with the hose. Then empty the solution tank with the transparent hose



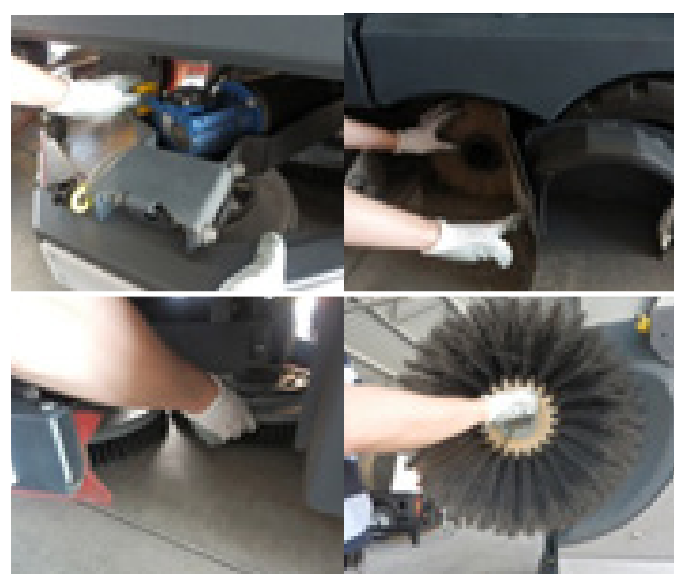
14. Wash with clean water the recovery tank and the vacuum grid. Remove and clean the debris tray.



15. Close the solution tank valve and remove and clean the filter. Ensure sealing gasket remains in filter cap



16. Dump the hopper, remove and clean the filter



17. Remove and clean brushes and brooms



18. Take the squeegee off, check the blades wear status



19. Remove the side skirts and check the blade status



20. Clean the machine using a damp cloth and park it with the recovery tank open

If the machine has been used until the battery level indicator shows no charge, a full recharge of the batteries (10-12 hours) will be required. Failure to carry out this procedure may cause damage to the batteries. Charging the batteries after every use is recommended.

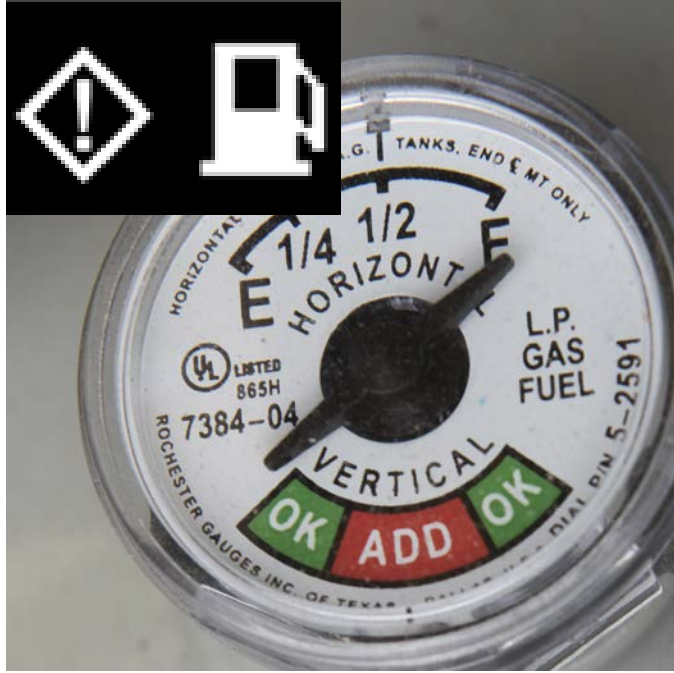
PLEASE ENSURE RED SOCKET IS LEFT DISCONNECTED AFTER RECHARGE IF THE MACHINE IS NOT TO BE USED ON A DAILY BASIS

Troubleshooting

- CS7010

ATTENTION! Do not use the machine before you have read and understood the Instructions for User Manual

The machine doesn't work as it should?



1 Check the Diesel fuel tank level / LPG bottle charge. In case re-fill/ change the LPG Bottle



2 For the battery version check the battery voltage and if needed recharge



3 Drive pedal must be released during engine cranking



4 Inspect the circuit breakers

The solution is not dispensed or poor water recovery?



1 Enough water in the solution tank?



2 Solution valve open?



3 Is the solution filter clean



4 Squeegee hose free from debris. Verify recovery tank is not full and float balls are blocking motor inlet

The machine doesn't clean as it should?



1 Squeegee angle must be verified



2 Squeegee height can be adjusted with castor wheels

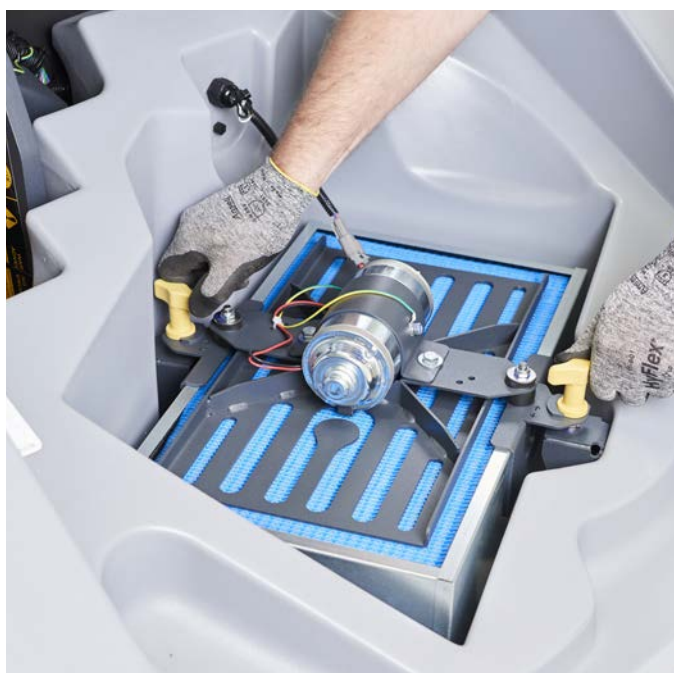


3 Remove and inspect squeegee blades

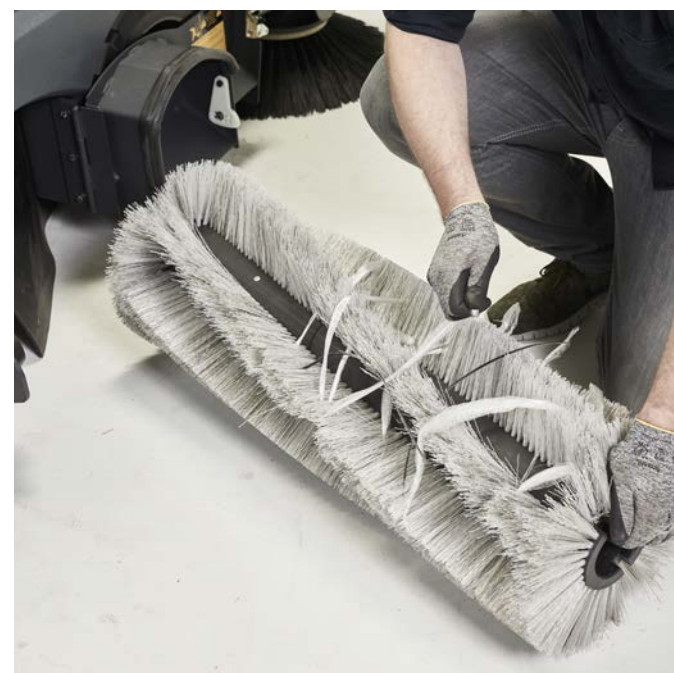


4 Release the lever, open the right side skirt holder and inspect brushes

The brush don't work as they should?



1 Panel filter inspection required every day



2 Inspect the main broom for ropes that may affect rotation



3 Inspect side brooms



4 Adjust main broom pattern per operators manual to avoid overload condition. Inspect broom and drive for debris or adjust height if overload detected